



# MASTER OF ENVIRONMENTAL POLICY DUKE UNIVERSITY

Duke | NICHOLAS SCHOOL OF THE ENVIRONMENT



Duke | SANFORD SCHOOL OF PUBLIC POLICY



昆山杜克大学  
DUKE KUNSHAN UNIVERSITY



# MASTER OF ENVIRONMENTAL POLICY

Duke's international Master of Environmental Policy (iMEP) program, offered at Duke Kunshan University, is a collaboration between the Sanford School of Public Policy and the Nicholas School of the Environment at Duke University. This program trains students to be global environmental leaders with the knowledge and experience to create evidence-based environmental policy solutions.

Through this program, students not only benefit from small classes, one-to-one interaction with world-class faculty, a cutting-edge research center and unparalleled career opportunities, but also earn an advanced degree from world-renowned Duke University. iMEP students have the opportunity to immerse themselves in a variety of fields, including but not limited to economics, statistics, energy, climate change, water management, conservation biology, environmental health, environmental law and governance.

iMEP students develop their expertise on a specific topic through an internship and a one-year Masters Project. For students around the world who care about the environment and who want to make a difference, the iMEP program based at DKU is a place where they can meet their mentors and friends, and greet new challenges and discoveries.



## TWO CAMPUSES

When you join the iMEP program, you can enjoy the best of two campuses in two countries – Duke University in the United States and Duke Kunshan University in China. Both campuses boast state-of-the-art facilities for work and play. You can be sure your unique campus life experience in the U.S. as well as China will be one you will value for years to come.



### Duke University

Duke University is located in Durham, North Carolina, a city with vibrant research, medical and arts communities. Durham, along with nearby cities Raleigh and Chapel Hill, form the Research Triangle – a growing metropolitan area of more than a million people. Here, you can also find a bustling downtown area, convenient suburban shopping, and the serenity of Duke Forest.



### Duke Kunshan University

A state-of-the art campus covers a 200-acre area in Kunshan's Yangcheng Lake Science and Technology Park. Located in close proximity to both Shanghai and Suzhou, and connected to both by high-speed rail, the city of Kunshan is a center for business and high-tech research and manufacturing, and has one of the fastest growing economies in China.



# CURRICULUM

The curriculum consists of 16 courses (48 course hours) spread out over 2 years. Students are required to enroll in 7 core courses, a full year of the Masters Project course, and 7 elective courses. Students will spend 3/4 of their time at Duke Kunshan and 1/4 at Duke.

## YEAR 1 FALL

Environmental Economics  
Statistics and Program Evaluation  
for Environmental Policy  
Environmental Policy Analysis  
1 Elective

## YEAR 2 FALL

Master's Project Capstone\*  
3 Electives  
*Option to study abroad at Duke  
University, North Carolina, U.S.*

## YEAR 1 SPRING

Environmental Science  
Environmental Policy Practicum  
Environmental Policy Process  
1 Elective

## YEAR 2 SPRING

Master's Project Capstone\*  
Environmental Law,  
Governance and Regulation  
2 Electives

## ELECTIVES

Environmental GIS  
Key Topics in International Environmental Policy  
Research Method  
Climate Change Economics and Policy  
Environmental Economics II  
Natural Resources Management  
Energy Policy

\* Under faculty supervision, small groups of students will work with clients to develop solutions to real-world environmental policy challenges. Courses are subject to change.



# CLASS PROFILE

## TYPICAL CLASS STATUS

15-25

Class Size

70%

Fresh Graduates

22-26

Age Range

1-2 years

Postgraduate Work Experience

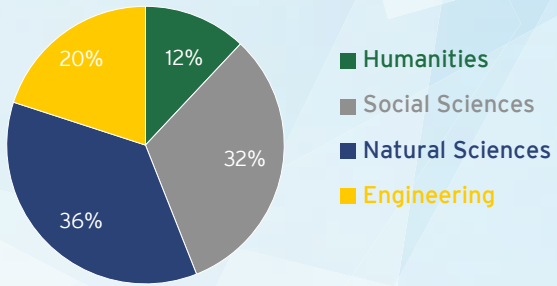
3.4 - 3.8

Undergraduate GPA

312 - 335

GRE Range

## UNDERGRADUATE MAJORS



## RECENT CAREER FOCUS

- Global Environmental Organization
- Management Consulting Firm
- Energy Consulting Firm
- Academia
- Media and Communication
- Non-government Organization



# RESEARCH CENTER

The Environmental Research Center at Duke Kunshan University builds upon the reputation of environmental research at Duke University. It works in close collaboration with the Nicholas School of the Environment, Sanford School of Public Policy, Nicholas Institute for Environmental Policy Solutions, and Energy Initiative at Duke.

The research center integrates research and educational programs on environmental science and policy. It provides a hub for faculty and students to engage in interdisciplinary and policy-relevant research in China and beyond.

The joint research endeavor highlights four areas:

- Environmental Economics
- Ecology and Conservation
- Environmental Governance
- Environmental Health

## RECENT RESEARCH PROJECTS:

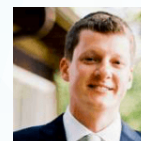
- An economic analysis of the top-level design of China's carbon market | **Junjie Zhang**
- The use of social media by local environmental bureaus in China | **Coraline Goron**
- Environmental determinants of healthy longevity in China | **John Ji**
- Smart subsidies for catchment conservation in Malawi | **Patrick Ward**
- Comparison between China and India for impacts of livestock grazing in forests | **Binbin Li**
- Perceiving and debating the socio-economic costs of reducing air pollution in China: the role of environmental NGOs | **Kathinka Fürst**



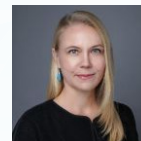
# FACULTY



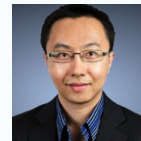
**JINGBO CUI**  
Associate Professor  
of Applied Economics,  
Division of Social Sciences



**JACKSON EWING**  
iMEP Faculty Lead,  
Duke Kunshan Director,  
Nicholas Institute



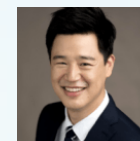
**KATHINKA FÜRST**  
Assistant Adjunct Professor  
of Environmental Policy



**SONG GAO**  
Professor of  
Environmental Science/  
Chemistry



**CORALINE GORON**  
Assistant Professor of  
Environmental Policy



**MOON JOON KIM**  
Visiting Assistant  
Professor of  
Environmental Economics



**BINBIN LI**  
Assistant Professor of  
Environmental Science



**JOHN S. JI**  
Associate Director of the  
iMEP Program; Assistant  
Professor of Environmental  
Health Science



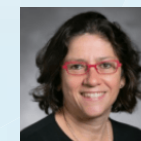
**BILLY PIZER**  
Senior Associate Dean of  
Sanford School of Public  
Policy; Professor of  
Environmental Science and  
Policy, Duke University



**ANNAMIEKE VAN DEN  
DOOL**  
Assistant Professor of  
Environmental Policy



**PATRICK S. WARD**  
Assistant Professor of  
Environmental Economics  
and Policy



**ERIKA WEINTHAL**  
Lee Hill Snowden Professor  
of Environmental Policy,  
Duke University



**WILLIAM WINNER**  
Professor of Environmental  
Science; Chair, Division of  
Natural and Applied Sciences,  
Undergraduate Program



**JUNJIE ZHANG**  
Director of the iMEP Program;  
Associate Professor of  
Environmental Economics



**JIM ZHANG**  
Professor of Global and  
Environmental Health,  
Nicholas School of the  
Environment, Duke University



## ALUMNI STORIES



### KELLEY REARDON/ IMEP' 19

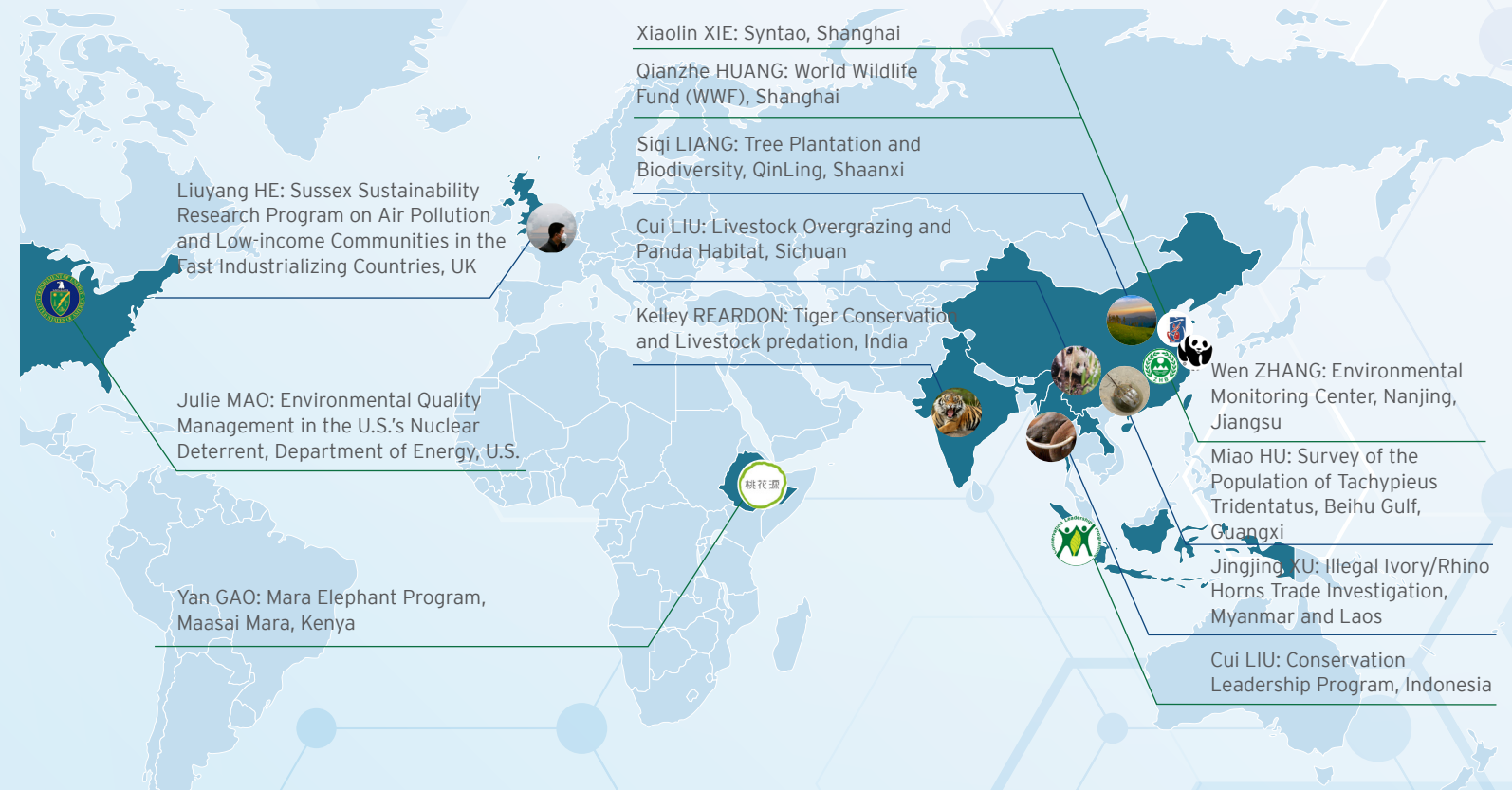
Kelley Reardon is a second-year graduate student in the iMEP program. She focuses on conservation, protected areas, and human-wildlife conflict. Last summer, Kelley ventured to India, where she led a research project in close collaboration with an NGO called *The Centre for Wildlife Studies- India (CWS)*. She developed a socioeconomic survey and conducted household interviews in southern India for one month. As part of Professor Binbin Li's research group, Kelley is also involved with the *livestock overgrazing research project in Sichuan province, China*. She spent part of her summer collecting ecological data in the mountainous bamboo forests of *Wanglang National Nature Reserve*. The iMEP program has provided Kelley with the opportunity to learn about the research process first-hand, from survey design to fieldwork, data analysis, and report writing. Kelley says,

“The opportunity to immerse myself in another culture and spend the summer in the field pushed me to grow as a person and a professional. iMEP has provided an abundance of resources to support my classmates and I as we evolve into leaders in environmental policy. I feel confident in my abilities and prepared for a career in the real world.”

## STUDENT PROJECTS AND INTERNSHIPS

### RESEARCH PROJECTS

### INTERNSHIP



# ALUMNI STORIES



## XIAOLIN XIE / IMEP' 19

Xiaolin Xie is a second-year student in the iMEP program. She interned at China Emission Exchange Co., Ltd. during her first year winter break, gaining in-depth knowledge and first-hand experience of *China's Emission Trading Scheme*. The following summer, Xiaolin interned at the consulting giant *Syntao Co., Ltd* and developed her research on Corporate Social Responsibility (CSR) there into her Master Project titled *“The Effect of CSR on Financial Performance of Power Companies in China.”* Xiaolin is also a productive participant of a variety of interdisciplinary research projects at DKU's Environmental Research Center, including Green Finance for the Belt and Road Initiative and Environmental Disclosure of Green Investment. Currently, Xiaolin accepted an offer from PwC, the second largest professional services firm in the world.

“The iMEP program has helped me to improve my skills in statistics, policy writing, public presentation, and economics, which will support my goal to initiate environmental protection in the business world. The iMEP program at DKU is not only an ideal environment for academic study, but also a place for students to find their passions and prepare for their future career.”

# COST OF ATTENDANCE \*

## FOR INTERNATIONAL STUDENTS

	FALL	SPRING
Tuition	\$20,500	\$20,500
Health Insurance	\$1,161	
Housing	\$1,306	\$1,306
Board	\$1,372	\$1,714
Miscellaneous /Personal Expenses	\$871	\$1,089
	\$25,210	\$24,609

## FOR CHINESE STUDENTS

	FALL	SPRING
Tuition	¥90,000	¥90,000
Health Insurance	¥200	
Housing	¥9,000	¥9,000
Board	¥9,450	¥11,813
Miscellaneous /Personal Expenses	¥6,000	¥7,500
	¥114,650	¥118,313

\* All figures are estimates only, please visit our website for more information about cost of attendance: [www.dukekunshan.edu.cn/en/environment/cost-attendance](http://www.dukekunshan.edu.cn/en/environment/cost-attendance)

## SCHOLARSHIP & FINANCIAL AID

Scholarship support is available to ensure qualified students can participate in the iMEP program, and Duke Kunshan is dedicated to providing full or partial scholarships to students who need financial support.

All students are automatically considered for merit scholarships based on their Graduate School application. Additional scholarships of varying amounts will be available based on family financial circumstances.

Scholarships available for iMEP students:

- Chancellors' Scholarship
- Green Future Fund
- Bayeco Environment Fellowship
- Fubon Scholarship



## ADMISSION REQUIREMENTS

Applicants must hold the equivalent of a U.S. bachelor's degree from an accredited institution.

- Online application form
- Resume
- Statement of purpose
- Letters of recommendation
- Transcript
- Official GRE score
- Official TOEFL or IELTS score

## APPLICATION DEADLINE

PRIORITY DEADLINE: **January 15**

FINAL DEADLINE: **May 31**


Applications submitted after the deadline will be considered on a rolling basis.


**DUKE UNIVERSITY**  
Durham, NC 27708  
T: +1 (919) 613 9063  
E: [iMEP@dukekunshan.edu.cn](mailto:iMEP@dukekunshan.edu.cn)


**DUKE KUNSHAN UNIVERSITY**  
No. 8 Duke Avenue, Kunshan  
Jiangsu, China 215316  
T: +86 (0)512 3665 7038  
E: [iMEP@dukekunshan.edu.cn](mailto:iMEP@dukekunshan.edu.cn)



<http://environment.dukekunshan.edu.cn>

 [@masterofenvironmentalpolicy](https://www.facebook.com/masterofenvironmentalpolicy)

 [@dukekunshan](https://twitter.com/dukekunshan)

 [@dku\\_impe](https://www.instagram.com/dku_impe)

